

## "YCAM 10th Anniversary Program" Term 2

November 1 (Fri) - December 2 (Sun), 2014

Yamaguchi Center for Arts and Media [YCAM], Yamaguchi Central Park,  
Yamaguchi Central Shopping District and more.

### "YCAM 10th Anniversary Program" enters Round Two

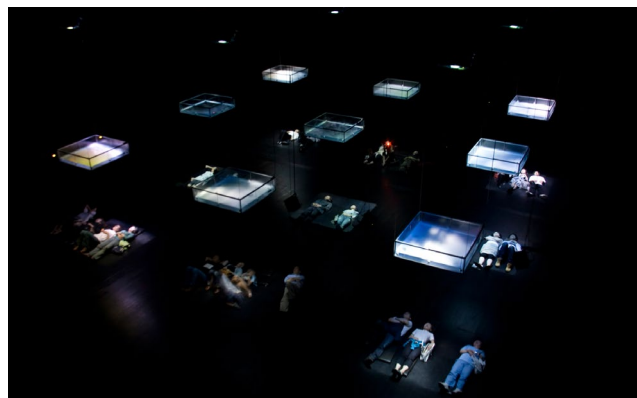
#### Programs of term 1 continue around Ryuichi Sakamoto's exhibition as a core feature

The Yamaguchi Center for Arts and Media [YCAM] introduces the start of round two of the "Yamaguchi Art and Environment for Tomorrow / YCAM 10th Anniversary" program, running for one month from November 1st.

This second half of the 10th Anniversary Program revolves around the "ART-ENVIRONMENT-LIFE" large-scale exhibition introducing three installations including a brand new one by the program's artistic director, musician Ryuichi Sakamoto. While closing in on the 10th Anniversary Program's core concepts of "art", "environment" and "life", round two comes with another edgy lineup exploring and proposing future forms of artistic expression in the 21st century.

In addition to the main exhibition, this part of the program includes the interactive "walking around surround installation" based on YCAM's original workshop series, as well as the "Korogaru Pavilion" in the Central Park, and the "YCAMDOMMUNE" and "LIFE by MEDIA" programs in Yamaguchi's central shopping area, all of which have gained great popularity in round one.

Look forward to this second half of the program that agglutinates the past and future of YCAM.



Ryuichi Sakamoto + Shiro Takatani "LIFE - fluid, invisible, inaudible..."  
(2007 / Commissioned by YCAM)



Yoshinari Nishio "PUBROBE" (2013)

[INQUIRY]



山口情報芸術センター  
Yamaguchi Center for Arts and Media

Yamaguchi Center for Arts and Media [YCAM] PR Media Lab Tanaka and Sawada

TEL: 083-901-2222 FAX: 083-901-2216 email: [press@ycam.jp](mailto:press@ycam.jp)

7-7 Nakazono-cho Yamaguchi-city 7530075 JAPAN

<http://www.ycam.jp>

## Term 2 revolves around Ryuichi Sakamoto's exhibition as a core feature

### Ryuichi Sakamoto "ART-ENVIRONMENT-LIFE"

**November 1 (Fri), 2013 - March 2 (Sun), 2014**

**Closed on Tuesdays, December 29 - January 3**

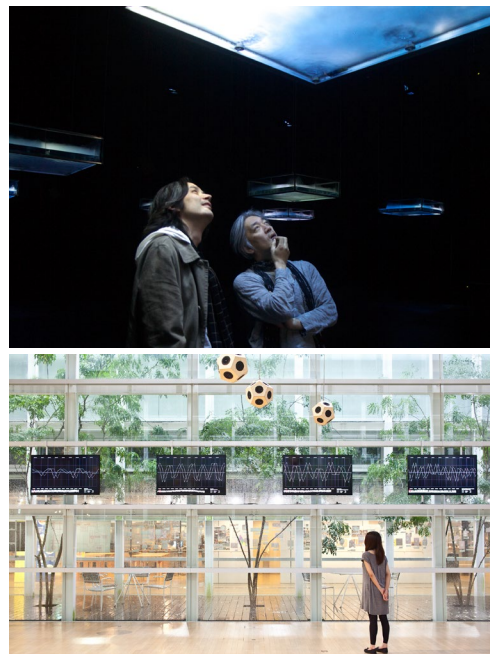
**Opening hour: 10:00 - 19:00**

**Venue: Yamaguchi Center for Arts and Media [YCAM]**

**Studio A, Studio B and Foyer**

In this large-scale exhibition, the 10th Anniversary Program's artistic director Ryuichi Sakamoto and artist Shiro Takatani present the results of their head-on approach to the 10th Anniversary Program's main theme. Following the previously shown "Forest Symphony", the program features a new version of "LIFE – fluid, invisible, inaudible...", a work that was first unveiled at YCAM in 2007, and a brand new creation titled "water state 1".

As a related event, a talk session moderated by critic Akira Asada, combined with a concert with sho player Mayumi Miyata and Ryuichi Sakamoto, takes place on January 5th.



### "walking around surround Installation"

**November 1 (Fri) - December 1 (Sun) Closed on Tuesdays**

**Opening hour: 13:00 - 18:00**

**Venue: Harihari (Dojomonzen 2-3-8, Yamaguchi City)**

Based on YCAM's original "walking around surround" workshop series, this interactive sound installation is exhibited at a private house in Yamaguchi City.



### "Music Movies Selected by Ryuichi Sakamoto" (term 2)

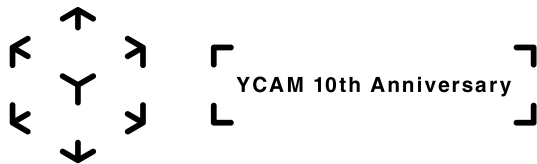
**November 8 (Fri) - 18 (Mon)**

**Venue: Yamaguchi Center for Arts and Media [YCAM] Studio C**

This program combines screenings of movies selected by Ryuichi Sakamoto, one of the world's leading authorities in the field of film music, with a focus on "the relationship between film and sound/music", and a lecture by musician Yuichi Kishino.

\* Please check the website for a detailed program.





October 17, 2013 Press Release

Yamaguchi Center for Arts and Media[YCAM] 10th Anniversary

---

## Popular programs from Term 1 continue!

### Naohiro Ukawa "YCAMDOMMUNE"

November 1 (Fri) - December 1 (Sun) Closed on Tuesdays

Opening hour: Mondays, Wednesdays and Thursdays 13:00 - 22:00

Fridays, Saturdays, Sundays and Holidays 12:00 - 22:00

Venue: DOMMUNE Building (Dojomonzen 1-2-31, Yamaguchi City)

Naohiro Ukawa's live streaming channel/studio "DOMMUNE" teamed up with YCAM, and descends to Yamaguchi's shopping district for occasional broadcasts of original programs made in Yamaguchi!



### "LIFE by MEDIA"

November 1 (Fri) - December 1 (Sun) Closed on Tuesdays

Opening hour: 12:00 - 17:00

Venue: Yamaguchi Central Shopping District

Participating artists: Hiroshi Inukai + Ryoko Ando, Yoshinari Nishio, Takafumi Fukasawa

Three winners of the competition for works focusing on today's significantly changing "ways of life/living" are implemented in the central shopping district.



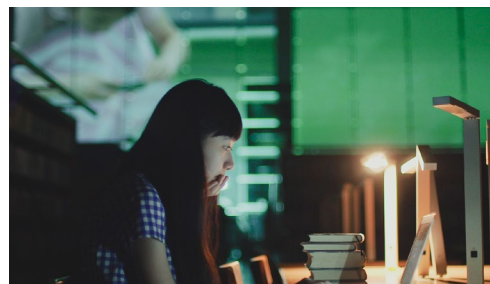
### "FILM by MUSIC"

July 6 (Sat) - December 1 (Sun) Closed on Tuesdays

Opening hour: 12:00 - 17:00

Venue: FRANK (Dojomonzen 2-4-19, Yamaguchi City)

This screening program introduces the winners of a competition for movies based on music made for films that don't actually exist. Additionally screened/displayed are original works by up-and-coming filmmakers.



### "Korogaru Pavilion"

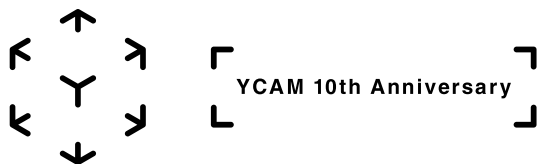
July 26 (Fri) - 18 (Mon) Closed on Tuesdays

Opening hour: 10:00 - 18:00

Venue: Yamaguchi Central Park

An indoor yet at once natural outdoor kind of space, this pavilion is equipped with various media technology embedded in its irregularly shaped features. Visitors can witness ever-changing sceneries of children inventing and playing their own games. Designed by architecture studio "assistant".





October 17, 2013 Press Release

Yamaguchi Center for Arts and Media[YCAM] 10th Anniversary

#### Event Data

## "YCAM 10th Anniversary" Term 2

November 1 (Fri) - December 1 (Sun)

\* Ryuichi Sakamoto's exhibition "ART - ENVIRONMENT - LIFE" is open through March 2, 2014.

Venue: Yamaguchi Center for Arts and Media [YCAM], Yamaguchi Central Park,  
Yamaguchi Central Shopping District and more

#### Program:

- Ryuichi Sakamoto "ART-ENVIRONMENT-LIFE"
- "walking around surround Installation"
- "Music Movies Selected by Ryuichi Sakamoto" (term 2)
- Naohiro Ukawa "YCAMDOMMUNE"
- "LIFE by MEDIA"
- "FILM by MUSIC"
- "Korogaru Pavilion"

\* For detailed information on individual programs please visit the 10th Anniversary Program website. <http://10th.ycam.jp>

\* Please note that the international symposium "Localizing Media Practice", originally scheduled for December 1, was rescheduled for summer 2014.

#### Map

